



[Resources]

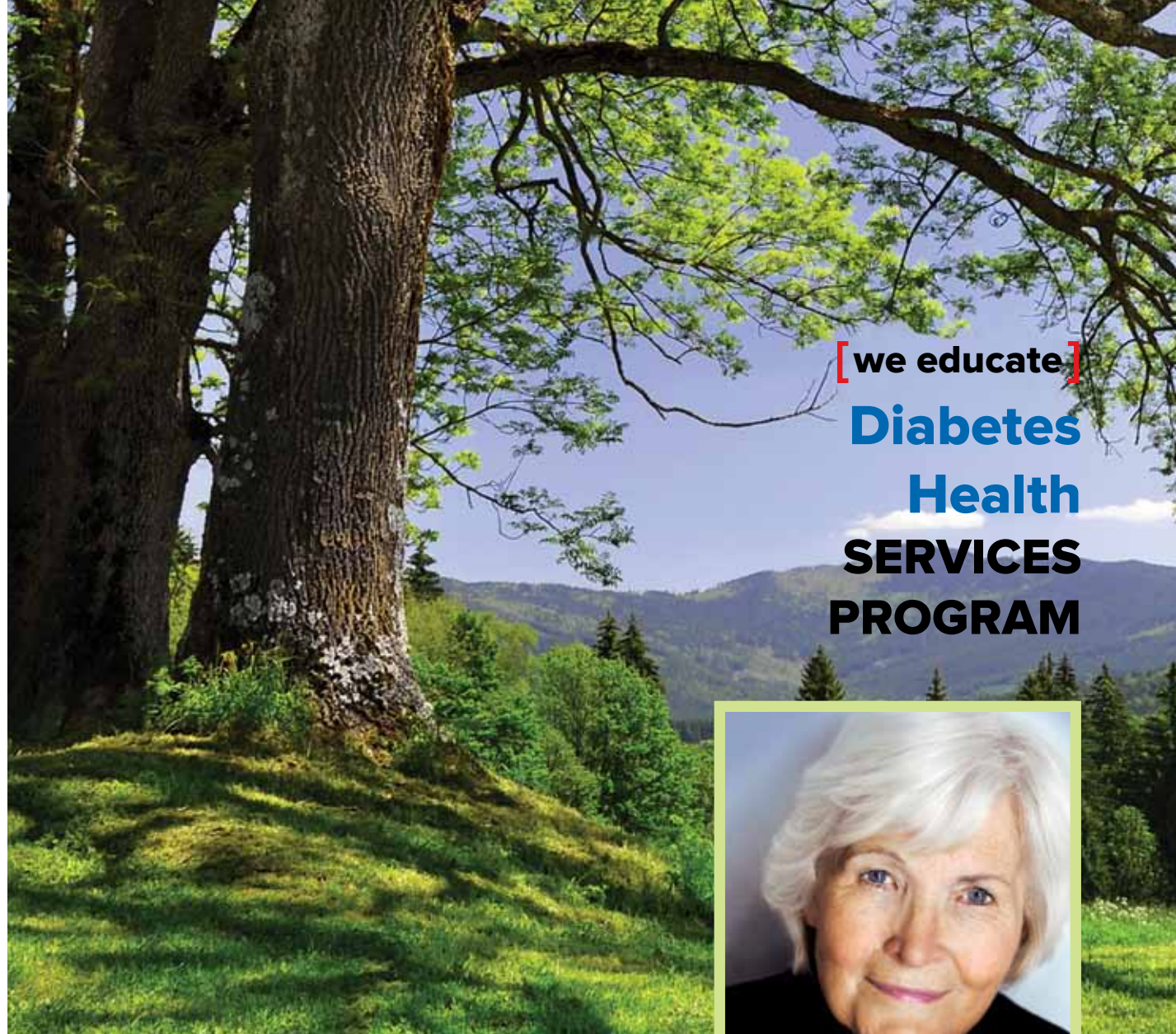
More information is available:

Canadian Diabetes Association
website: www.diabetes.ca
People with Diabetes
website: www.peoplewithdiabetes.ca

[Contact Us]

How do I or my patient contact the Calgary Co-op CDE?

You can contact the Calgary Co-op CDE by calling any Calgary Co-op Pharmacy. The pharmacy staff will help contact the CDE and set up an appointment for the patient.



[we educate]
**Diabetes
Health
SERVICES
PROGRAM**



If you have any questions about diabetes health,
talk to your Calgary Co-op pharmacist.

CO-OP PHARMACY

www.calgarycoop.com

CO-OP PHARMACY

Diabetes Health

[Education]

What does the Calgary Co-op Diabetes Health Services Program provide?

Our Diabetes Health Services Program is designed to educate and teach patients how to self-manage their diabetes. In addition, this program offers consultation and support for patients interested in monitoring their A1C levels.

The program is facilitated by Calgary Co-op pharmacists, who are Certified Diabetes Educators that have been trained in A1C monitoring to assess long term blood glucose level control.



[Expectations]

What can patients expect from the Calgary Co-op Diabetes Health Services Program?

It all begins with a one-to-one consultation with the Calgary Co-op Certified Diabetes Educator (CDE). This private consultation can last anywhere from 30-60 minutes and provides a patient with individualized counseling tailored to their specific needs. Following the consultation, further phone calls or appointments will be provided to ensure the continuity of care. To book a one-to-one consultation, a patient simply needs to call their local Calgary Co-op Pharmacy.

[Diabetes Consultation]

What does a diabetes consultation consist of?

During the consultation, the Calgary Co-op CDE will review the following as it applies to your patient:

- Blood glucose and/or A1C level assessment
- Patient history of diabetes
- Diabetes pathophysiology so the patients will have a better understanding of their condition
- Medications review
- Proper use of blood glucose monitors
- Provide diabetes action plan for patient self-management
- Provide additional resources for patients



[A1C Screening Clinics]

Our CDE pharmacists conduct A1C clinics where they meet with diabetic or pre-diabetic patients. They conduct an A1C test that measures the patient's average glucose level over a 3-month span. The results are explained to them in detail and, if required, a future appointment is set up for a more thorough evaluation of the patient's diabetes.



[Community]

Many of our CDE pharmacists have established close relationships with family physicians in their community. They work collaboratively with these physicians towards the ultimate goal of improving the health of individuals with diabetes. Many physicians are now referring their patients to our CDE pharmacists for initial consults for newly diagnosed diabetics, insulin starts, insulin dose adjustments, structured medication reviews and other diabetes related issues that their patients have.

A1C results and a summary of the consultation will be faxed back to the patient's physician for further interpretation and analysis.